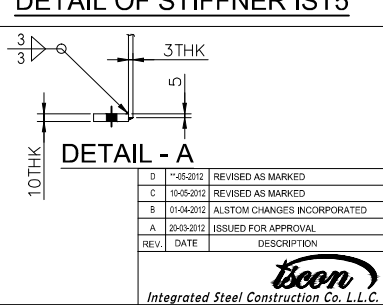
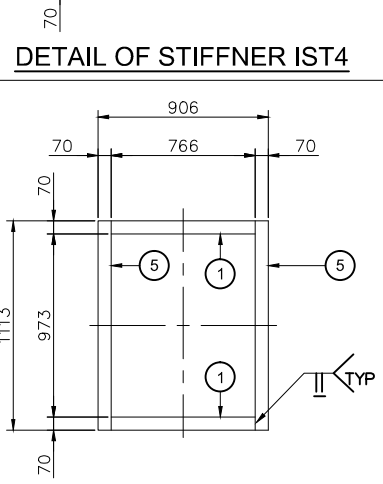
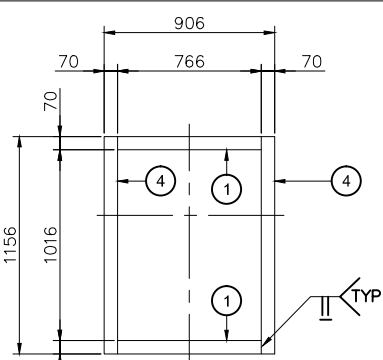
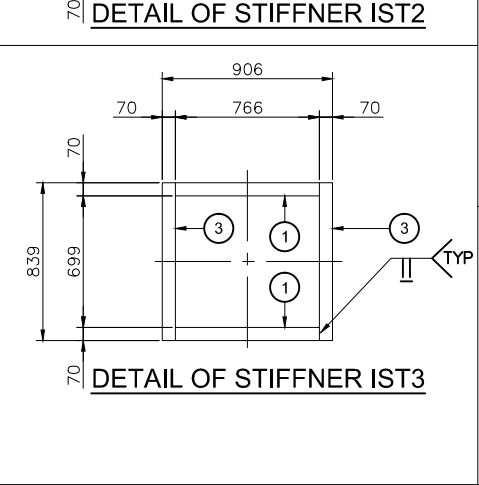
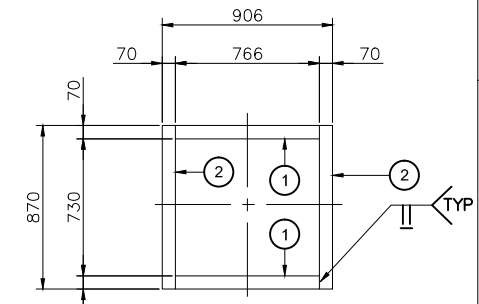
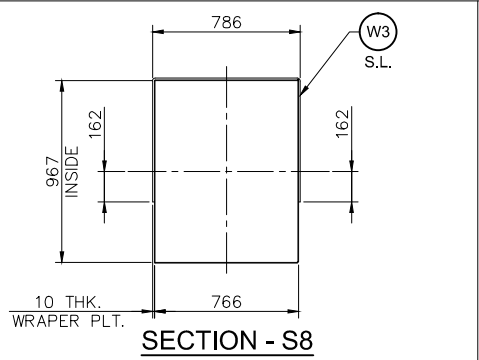
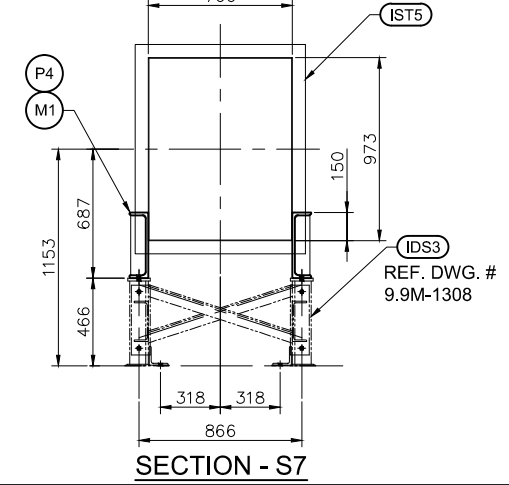
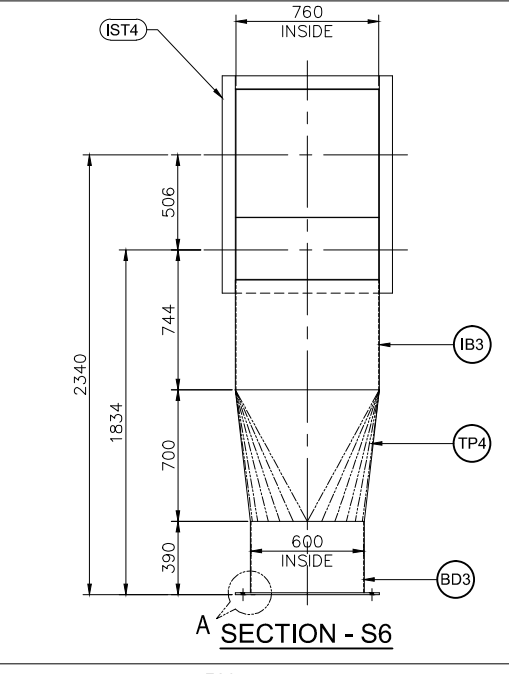
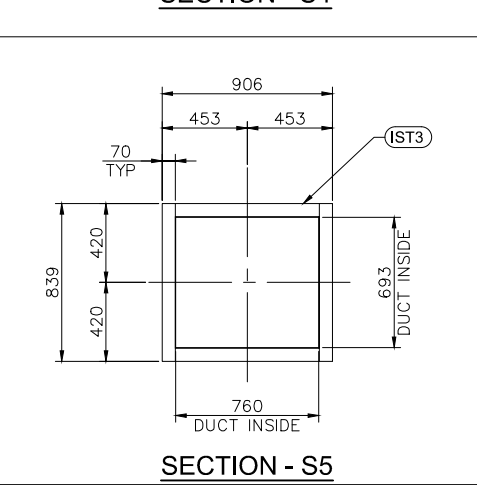
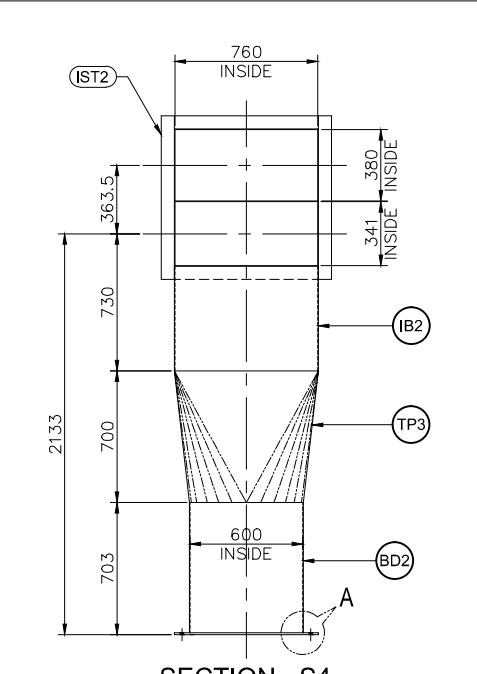
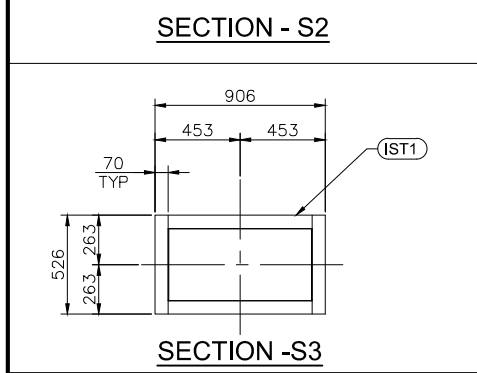
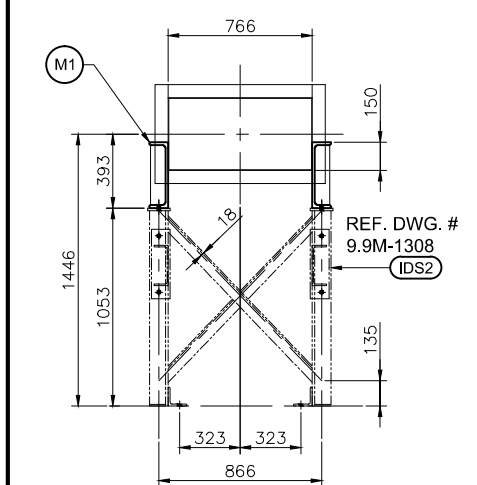
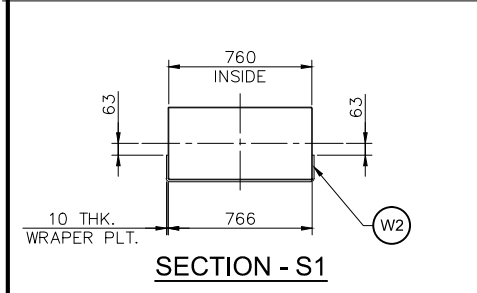


ELEVATION

MATERIAL LIST						
ERECTION Mark	Mark	Size	Grade	Qty.	Length	Weight
	P1	PL 3 THK. (327.23 W ²)	S235 JR	1	11825	777.00
	W2	PL 10 THK. x 70	S235 JR	1	1037	6.00
	W3	PL 10 THK. x 70	S235 JR	1	2073	12.00
	IST1	REF. DWG. # 9.9M-1303	S235 JR	4	STIFFENER	58.00
IST2	1	PL 10 THK. x 70	S235 JR	2	766	9.00
	2	PL 10 THK. x 70	S235 JR	2	870	10.00
IST3	1	PL 10 THK. x 70	S235 JR	12	766	51.00
	3	PL 10 THK. x 70	S235 JR	12	839	56.00
	1	PL 10 THK. x 70	S235 JR	2	766	9.00
IST4	4	PL 10 THK. x 70	S235 JR	2	1156	13.00
	1	PL 10 THK. x 70	S235 JR	6	766	26.00
IST5	1	PL 10 THK. x 70	S235 JR	6	1113	37.00
	M1	REF. DWG. # 9.9M-1303	S235 JR	4	UPN350	70.00
	P4	REF. DWG. # 9.9M-1303	S235 JR	8	PL 10 THK. x 80	16.00
	IB2	REF. DWG. # 9.9M-1306	S235 JR	1	PRESSURE DROP BEND	71.00
	IB3	REF. DWG. # 9.9M-1306	S235 JR	1	PRESSURE DROP BEND	69.00
	TP3	REF. DWG. # 9.9M-1305	S235 JR	1	TRANSITION PIPE	71.00
	TP4	REF. DWG. # 9.9M-1305	S235 JR	1	TRANSITION PIPE	70.00
	BD2	PL 3 THK. x 698	S235 JR	1	1895	32.00
	BD3	PL 3 THK. x 385	S235 JR	1	1895	18.00
	FL3	REF. DWG. # 9.9M-1291	S235 JR	2	FLANGE	44.00
					TOTAL	1525.00 KG.

TOTAL WEIGHT 3050.00 KGs



GENERAL NOTES:
 1. ALL DIMENSIONS ARE IN MM. AND ALL LEVELS ARE IN M.
 2. ALL WELDS ARE 3 MM CONTINUOUS FILLET WELD, U.N.O.
 3. ALL SHARP EDGES TO BE REMOVED.

REV	DATE	DESCRIPTION	DRAWN	CHECKED	APPROVED
03	**-05-12	REVISED AS MARKED	SCAD	SCAD	JLK
02	10-05-12	REVISED AS MARKED	SCAD	SCAD	JLK
01	01-04-12	ISSUED FOR FABRICATION	SCAD	SCAD	JLK

ALSTOM Power Environment
 Environmental Control Systems
 Competence Center, Aluminium

© This document is, unless otherwise agreed in writing, the property of ALSTOM Norway AS, and shall not be reproduced, copied, disclosed to any third party or used for any other purpose other than that for which it is supplied or disclosed.

EMAL PHASE II - GAS TREATMENT CENTRES (GTC) GTC-5332
DETAILS OF IMPULSE DUCT 32WL-ID2

Date	01-04-2012	Drawn by	SCAD	Checked by	SCAD	Approved by	JLK	Assembly No.	9.9M-1278	Sub No.	sub no	Scale	1:20
REV.	DATE	DESCRIPTION		DRAWN		CHECKED		APPROVED					

Drawing No. **EE3-000567 - 9.9M-1307** Rev. **03**

Last Print Date: \$DATE\$ \$TIME\$ \$FILES\$